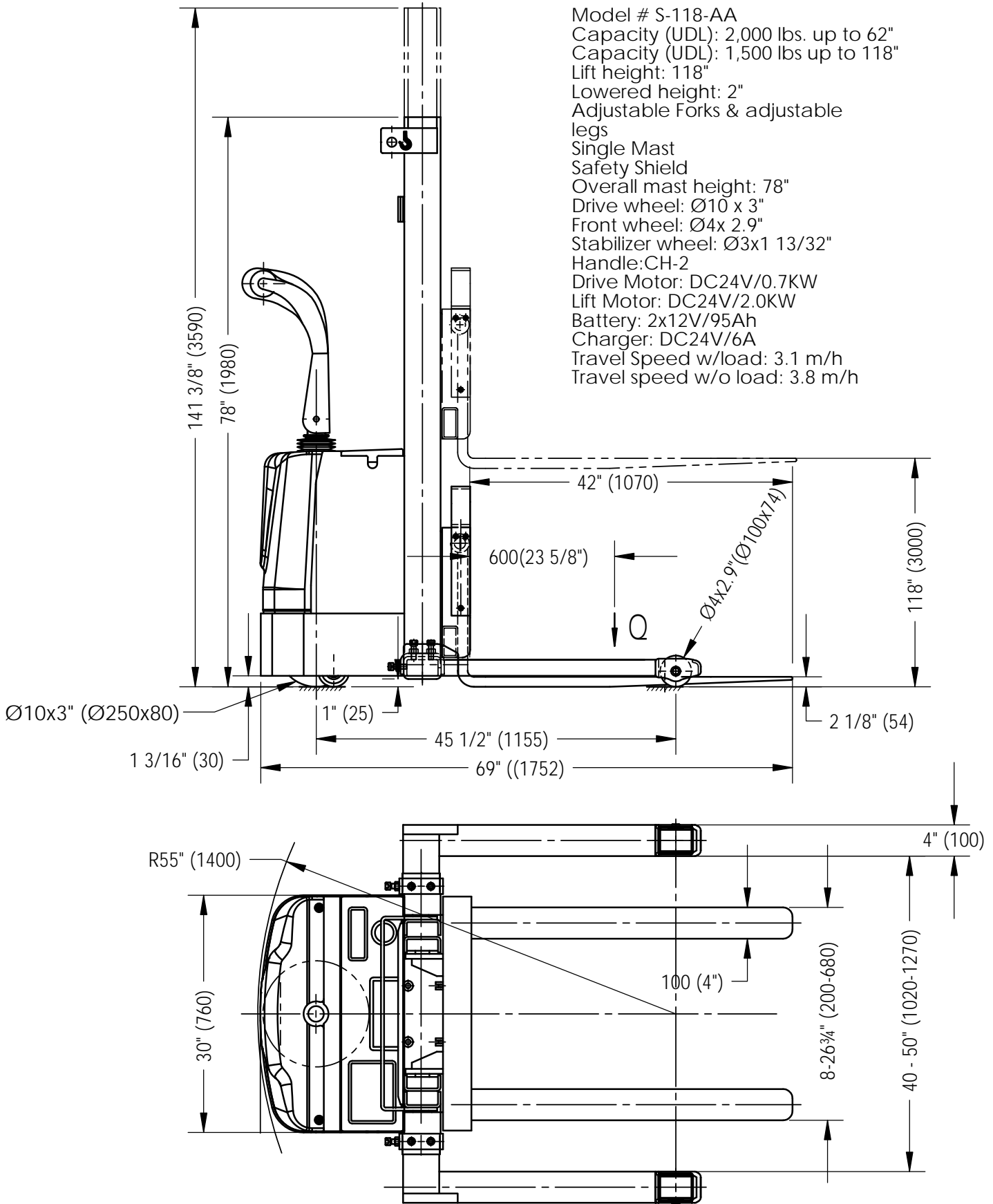


**Specifications**

Model # S-118-AA  
 Capacity (UDL): 2,000 lbs. up to 62"  
 Capacity (UDL): 1,500 lbs up to 118"  
 Lift height: 118"  
 Lowered height: 2"  
 Adjustable Forks & adjustable legs  
 Single Mast  
 Safety Shield  
 Overall mast height: 78"  
 Drive wheel: Ø10 x 3"  
 Front wheel: Ø4x 2.9"  
 Stabilizer wheel: Ø3x1 13/32"  
 Handle:CH-2  
 Drive Motor: DC24V/0.7KW  
 Lift Motor: DC24V/2.0KW  
 Battery: 2x12V/95Ah  
 Charger: DC24V/6A  
 Travel Speed w/load: 3.1 m/h  
 Travel speed w/o load: 3.8 m/h



<b>VESTIL MANUFACTURING CORP.</b>		
DRAWN BY: TM	DATE: 09/18/2012	DRWG./FILE NAME:
Reference:		S-118-AA